

HONDA

PARTS CATALOG

MT125~K1

P8139

HC 40096

**AMERICAN HONDA MOTOR CO., INC.
100 WEST ALONDRA BOULEVARD, GARDENA, CALIFORNIA**

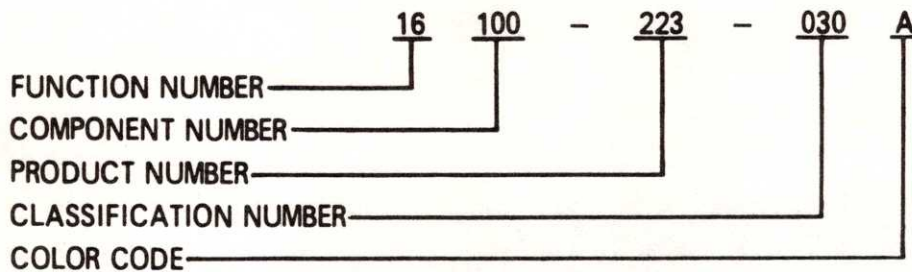
1st EDITION

© DECEMBER, 1974

INSTRUCTION FOR USE OF PARTS CATALOG

PART NUMBERS

The following diagram defines the figures used in the new HONDA PART NUMBER SYSTEM.



When placing a parts order with AMERICAN HONDA, be sure to use the HONDA CODE (H/C) in conjunction with the PART NUMBER.

The HONDA CODE for each item shown will be listed directly to the left of the PART NUMBER. Those part numbers without HONDA CODE are not available.

ISO THREADED PARTS

Nominal Dia. (Size of Bolt or Nut)	Width Across Flats (Wrench Size)	
	Present J.I.S.	Modified J.I.S. (I.S.O.)
3 mm	6 mm	5.5 mm
4 mm	8 mm	7 mm
5 mm	9 mm	8 mm
6 mm	10 mm	10 mm
8 mm	14 mm	12 mm
10 mm	17 mm	14 mm
12 mm	19 mm	17 mm
14 mm	21 mm	19 mm
16 mm	23 mm	22 mm
18 mm	26 mm	24 mm
20 mm	29 mm	27 mm

New wrenches in the 5.5 mm, 7 mm, 12 mm, 22 mm, 24 mm and 27 mm sizes will be required for the modified bolts and nuts. All other sizes are currently in use.

This change in hex size affects only the wrench sizes; interchangeability of bolts and nuts is not affected.

Change in Thread Pitch – The standard thread pitches for all bolts, nuts, and screws in the 3 mm, 4 mm, 5 mm and 12 mm sizes are changed as indicated below:

<u>Nominal Dia.</u>	<u>Thread Pitch</u>	
	<u>Present J.I.S.</u>	<u>Modified J.I.S. (I.S.O.)</u>
3 mm	0.6	0.5
4 mm	0.75	0.7
5 mm	0.9	0.8
12 mm	1.5	1.25

These changes will affect the interchangeability of threaded parts in these sizes. Care must be taken to use the correct pitch to avoid stripping.

These changes will also require new taps and dies.

To help avoid confusion in the 3 mm, 4 mm, 5 mm and 12 mm size, wherein the thread pitch has been changed, the modified J.I.S. (I.S.O.) threaded parts used by Honda will be marked such that they can be readily identified. The marks used are as follows:

<u>PART TYPE</u>	<u>DESCRIPTION OF MARKING</u>
STD. HEX BOLT	A number, indicating the strength of the bolt, will be embossed on the top of the bolt head. This mark will appear on modified J.I.S. (I.S.O.) bolts of all sizes , but as explained above all sizes except 4 mm, 5 mm, and 12 mm (there are no 3 mm hex bolts) will interchange with the present J.I.S. parts.
SLOTTED HEX BOLT	There will be a hemispherical embossment (bump) on the top of the bolt head in the 4 mm and 5 mm sizes (3 mm and 12 mm slotted hex bolts are not in use).
CAP BOLT	There will be a hemispherical dimple on the side of the bolt head in the 4 mm, 5 mm and 12 mm sizes (3 mm not in use).
STUD BOLT	There will be a hemispherical dimple or embossment on the nut end in the 5 mm and 12 mm sizes (3 mm and 4 mm studs are not in use).
ALL CROSS RECESS SCREWS	There will be a hemispherical embossment on the top of the screw head in the 3 mm, 4 mm and 5 mm sizes (12 mm not used).

ALL NUTS

There will be a hemispherical dimple on either the top or side of the nut in all sizes with changed pitch. This will also apply to nuts that are permanently welded to other parts.

All mechanics and parts department personnel should read and understand this change-over, to avoid confusion and damage to threaded parts.

ENGINE AND FRAME SERIAL NUMBERS

The engine and frame numbers should be checked prior to ordering parts for a specific motorcycle. HONDA engine numbers are located on the left portion of the engine and frame numbers on the left side of the frame body.

Parts list serial numbers are coded (E) for ENGINE and (F) for FRAME to assist you in identification.

Modified parts will show ENGINE or FRAME serial number in the remark column. These numbers will designate the start (FROM) and finish (TO) production run for that item listed to its left.

Newly introduced items will be listed from initial part installation serial numbers.

ILLUSTRATIONS

To aid identification of PARTS, (exploded) illustrations are incorporated in this catalogue. Available items in the illustrations are identified by NUMBERS which correspond with the PARTS descriptions on the PARTS list.

A separate PARTS list is provided for each illustration. Reference numbers on the PARTS list duplicate identification numbers on the illustration for assistance in choosing the correct PART. Addition to the numerical reference numbers, we have used numeral-alphabet reference numbers for the convenience of adding new PARTS to the PARTS list.

Find the illustration of PART you require and check the accompanying PARTS list for its HONDA CODE, NEW PART NUMBER, DESCRIPTION, etc.

PARTS RETURN

PARTS may not be returned to AMERICAN HONDA without prior written authorization. Written authorization may be obtained by writing to AMERICAN HONDA MOTOR CO., INC., 100 West Alondra Blvd., Gardena, California 90247. We will correct any error which we were of primary fault. This would cover damaged

PARTS, (not caused in mishandling by the delivery source), wrong parts, incorrect quantities, etc. Advise us of discrepancies within five (5) days of receipt. AMERICAN HONDA is not responsible for PARTS – returned to us without written authorization.

ADDITIONAL INFORMATION

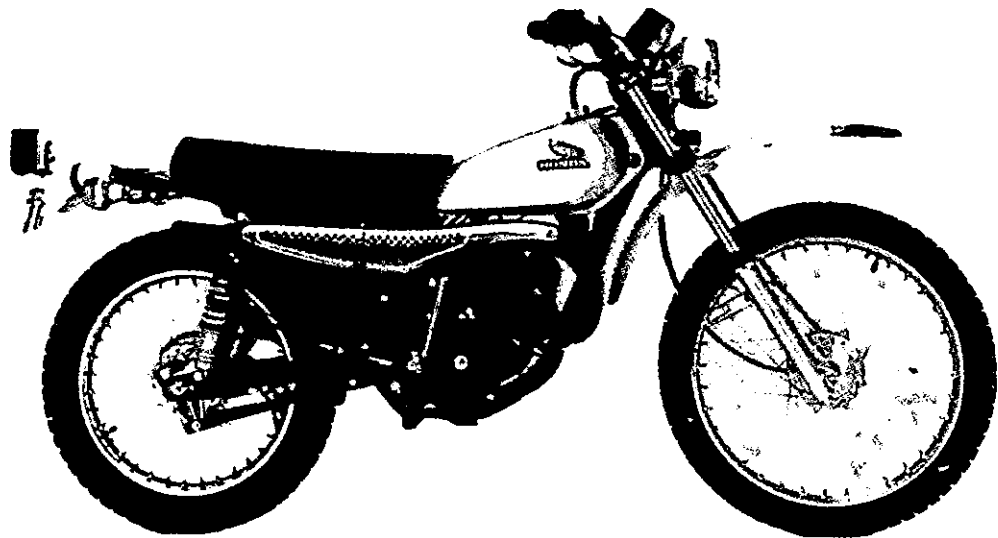
1. Dimensions of the PARTS in this catalogue are indicated in millimeter units.
2. L or R in the description of a PART stands for the LEFT hand side or the RIGHT hand side, which is decided by the direction of travel of the vehicle.
3. Many standard items, SPARK PLUGS, BOLTS, NUTS, WASHERS, PINS, which are in constant use are sold in multiples of ten and consideration when placing your order is advised.

4. ABBREVIATIONS

ASSY. – Assembly
COMP. – Complete

REF. – Reference
HEX. – Hexagonal

ADJ. – Adjusting
STD. – Standard



MT125

ENGINE NO.: MT125-1000001 TO SUBSEQUENT
FRAME NO.: MT125-1000001 TO SUBSEQUENT

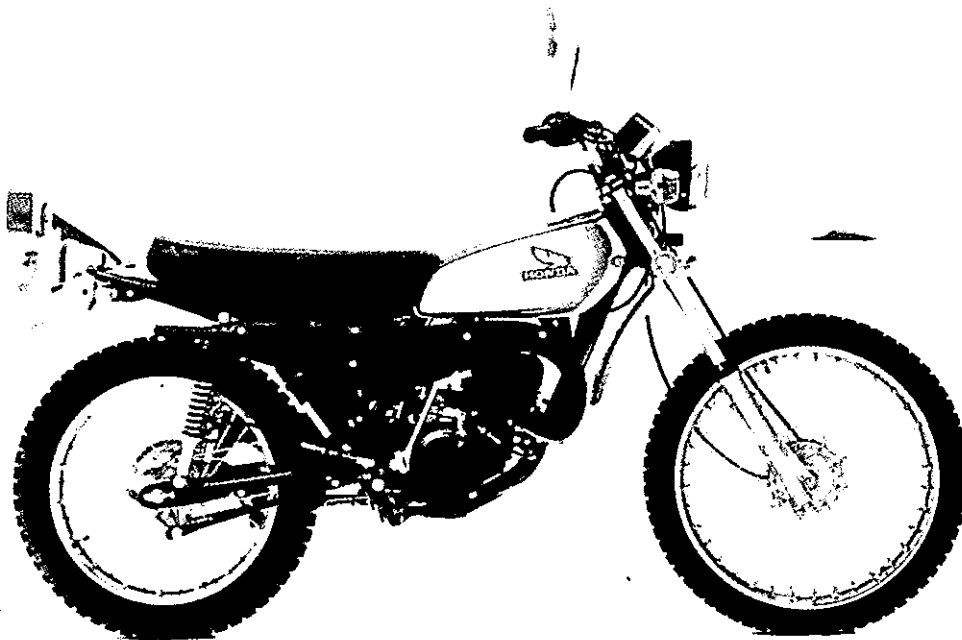
* * * * * ADDITIONAL INFORMATION * * * * *

ORDER CODE

P8110
33575
34287

PART NUMBER/DESCRIPTION

MT125 Parts Catalog
MT125 Owners Manual
MT125 Shop Manual



MT125K1

ENGINE NO.: MT125-200001 TO SUBSEQUENT
FRAME NO.: MT125-200001 TO SUBSEQUENT

***** ADDITIONAL INFORMATION *****

<u>ORDER CODE</u>	<u>PART NUMBER/DESCRIPTION</u>
P8139	MT125-K1 Parts Catalog
P9179	MT125K1 Owners Manual
P8610	MT125K1 Shop Manual

CONTENTS

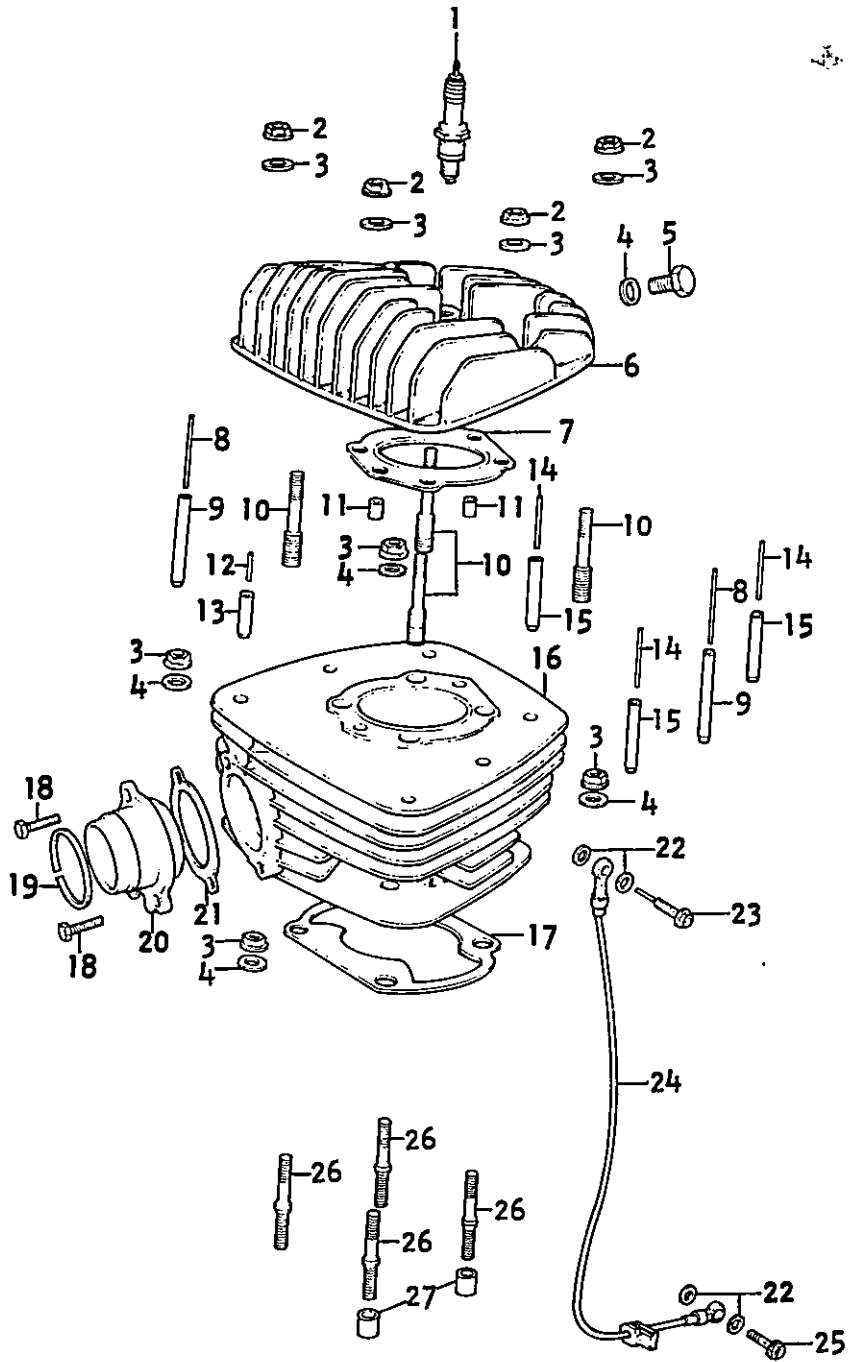
ENGINE GROUP

	PAGE
CYLINDER CYLINDER HEAD.....	3
RIGHT CRANKCASE COVER CLUTCH.....	5
CRANKSHAFT.....	7
KICK STARTER.....	9
TRANSMISSION.....	11
LEFT CRANKCASE COVER GENERATOR.....	13
CRANKCASE.....	15
CARBURETOR.....	17

FRAME GROUP

HANDLE BAR.....	19
FRONT CUSHION.....	21
FRONT WHEEL.....	23
REAR WHEEL.....	25
MUFFLER AIR CLEANER.....	27
REAR FORK REAR FENDER CHAIN CASE.....	29
FUEL TANK SEAT.....	31
REAR FENDER BATTERY.....	33
TAILLIGHT REAR WINKER.....	35
FRAME.....	37
SPEEDOMETER TACHOMETER.....	39

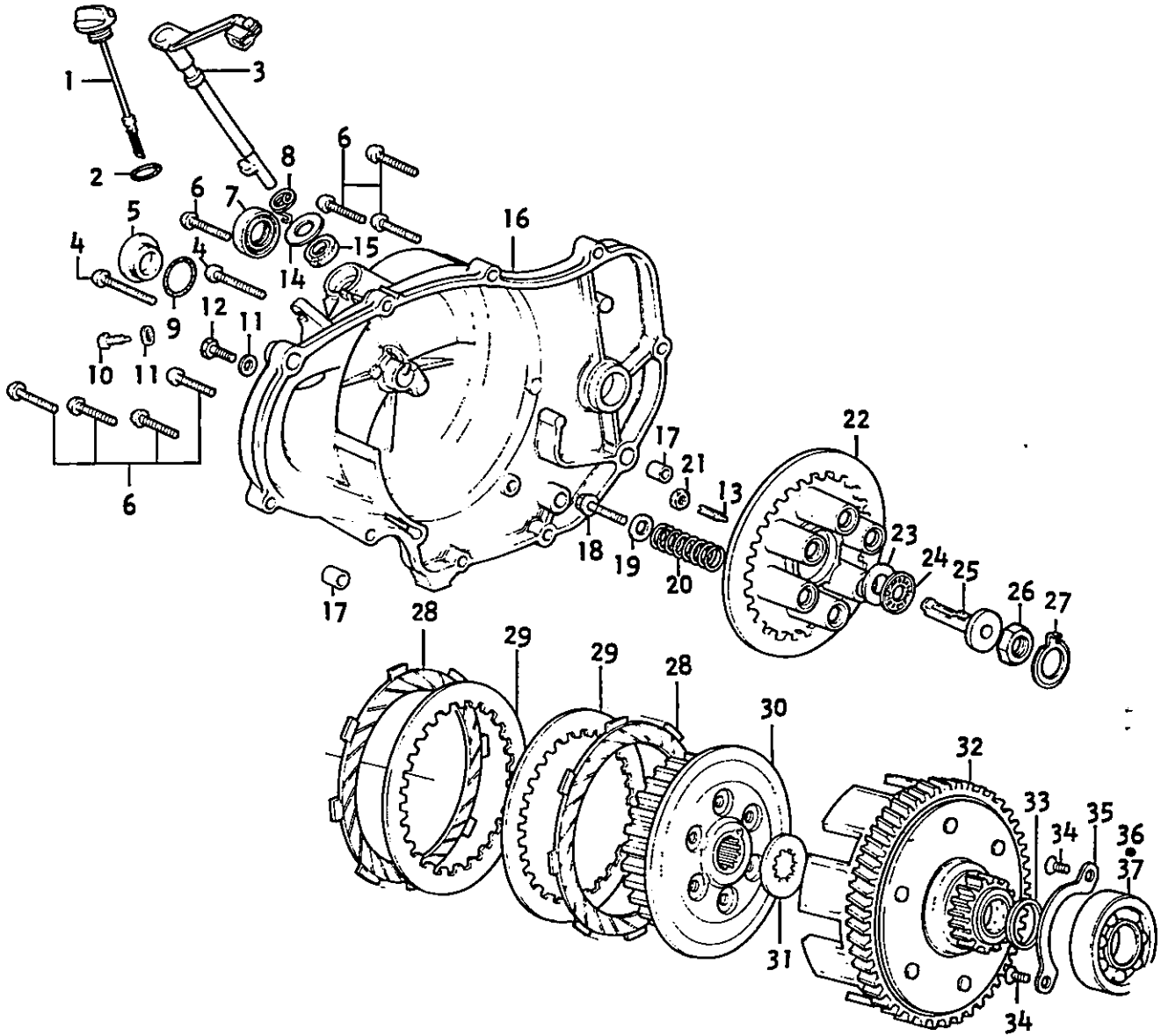
Cylinder . Cylinder Head



Cylinder . Cylinder Head

Ref. No.	H/C	Part Number	Description	MT		Remarks
				125	125K1	
1	22855	98079-58840	PLUG, SPARK *NGK B-8ES*.....	1	1	
2	34108	90232-360-000	NUT, 8MM.....	7	7	
3	34117	90456-360-000	WASHER, 9MM.....	7	7	
4	35618	90445-358-000	WASHER, SEALING, 14MM.....	1	-	
	35012	90061-358-000	BOLT, SEALING.....	-	1	
5	35351	90015-361-000	BOLT, 14X21.....	1	1	
6	35183	12200-361-000	HEAD, CYLINDER.....	1	1	
7	35184	12251-361-000	GASKET, HEAD CYLINDER.....	1	1	
8	35181	12122-361-000	BAR, INSERT B.....	2	2	
9	35178	12112-361-000	RUBBER, INSERT B.....	2	2	
10	34100	90034-360-000	BOLT, CYLINDER STUD.....	4	4	
11	29425	94301-06100	PIN A, DOWEL, 6X10.....	2	2	
12	35180	12121-361-000	BAR, INSERT A.....	1	1	
13	35177	12111-361-000	RUBBER, INSERT A.....	1	1	
14	35182	12123-361-000	BAR, INSERT C.....	3	3	
15	35179	12113-361-000	RUBBER, INSERT C.....	3	3	
16	35176	12100-361-000	CYLINDER COMP.....	1	1	
17	33877	12191-360-000	GASKET, CYLINDER.....	1	-	
	36949	12253-361-000	GASKET, CYLINDER *O.S.*.....	-	1	
18	05427	92000-06020	BOLT, HEX., 6X20.....	2	2	
19	35230	18358-361-003	RING, EXHAUST PIPE *NIPPON*.....	1	1	
20	35227	18351-361-000	JOINT, EXHAUST PIPE.....	1	1	
21	33925	18359-360-000	GASKET, EXHAUST.....	1	1	
22	35021	90461-357-000	WASHER, SEALING.....	4	4	
23	34856	15543-358-000	BOLT, SEALING, INLET PIPE.....	1	1	
24	35196	15510-361-000	HOSE COMP., OUTLET.....	1	1	
25	34855	15542-358-000	BOLT, SEALING.....	1	1	
26	35352	90031-360-000	BOLT, CYLINDER STUD.....	4	4	
27	34001	90701-360-000	PIN, DOWEL, 10X20.....	2	2	

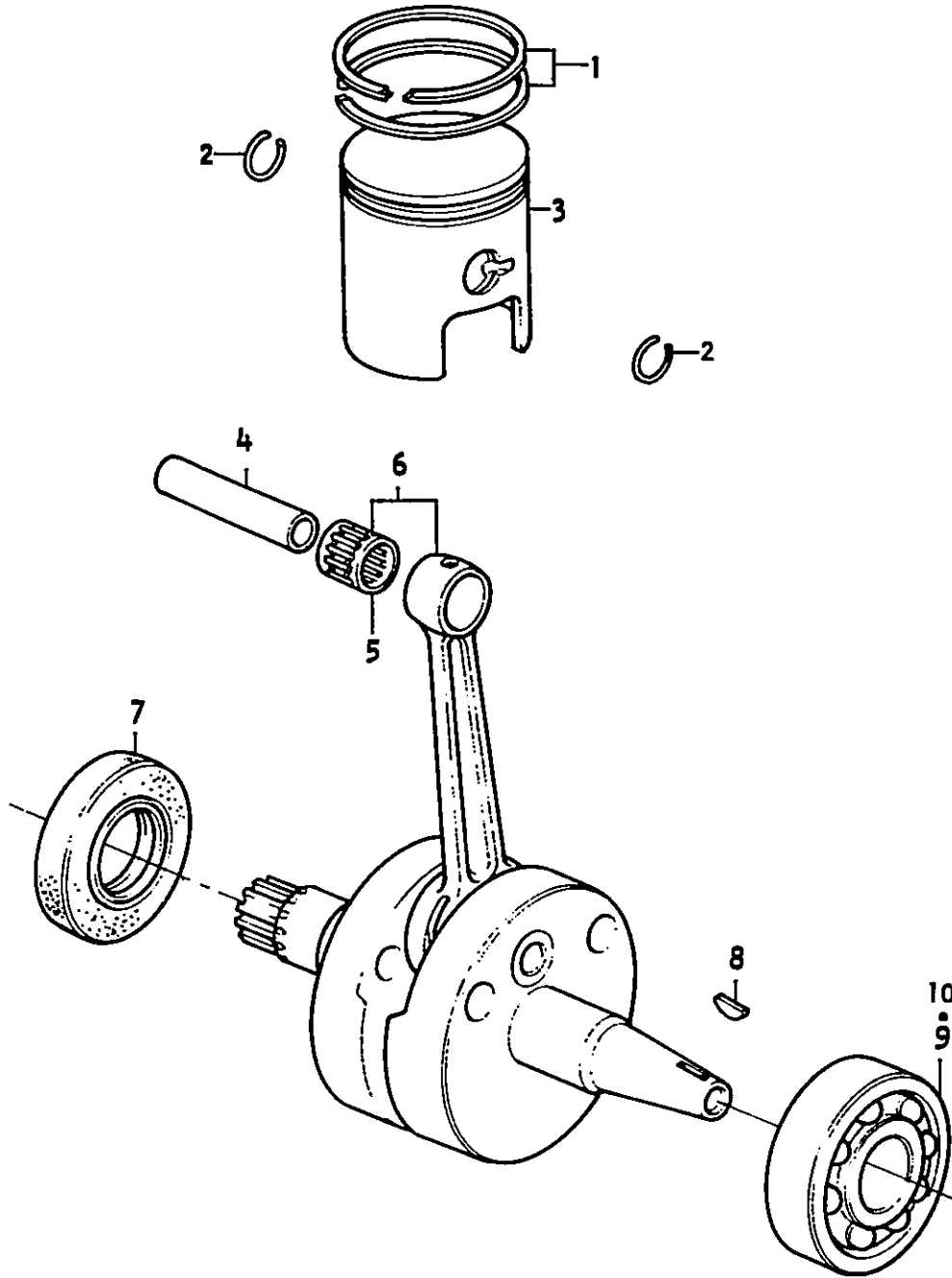
Right Crankcase Cover - Clutch



Right Crankcase Cover . Clutch

Ref. No.	H/C	Part Number	Description	MT		Remarks	
				125	125K1		
1		33895	15620-360-000	GAUGE, OIL LEVEL.....	1	1	
2		06509	91303-800-000	O RING, 16MM.....	1	1	
3		37374	22810-360-010	LEVER COMP., CLUTCH..... (SUPERSEDED BY 22810-360-020)	1	-	
		39404	22810-360-020	LEVER COMP., CLUTCH.....	1	1	
4		35360	93500-06032-07	SCREW, PAN, 6X32.....	1	1	
5		35171	11335-361-000	CAP, CLUTCH ADJUST.....	1	1	
6		35359	93500-06025-07	SCREW, PAN, 6X25.....	8	8	
7		34157	91205-360-000	OIL SEAL, 16X28X7.....	1	1	
8		33937	22816-360-000	SPRING, LIFTER SHAFT.....	1	1	
9		06522	91305-703-000	O RING, 20X2.0.....	1	1	
10		34101	90035-360-000	BOLT, SPECIAL, 6MM.....	1	1	
11		00480	90485-001-000	WASHER, SEALING, 6MM.....	2	2	
12		34102	90037-360-000	BOLT, OIL CHECK.....	1	1	
13		33940	22853-360-000	SCREW, CLUTCH ADJUST.....	1	1	
14		34031	90468-360-000	WASHER, SPECIAL, 26MM.....	1	1	
15		36942	91208-360-010	OIL SEAL, 13X22X5.....	1	1	
16		35170	11330-361-000	COVER, RIGHT CRANKCASE..... (SUPERSEDED BY 11330-361-305)	1	-	
		39903	11330-361-305	COVER, RIGHT CRANKCASE.....	1	1	
17		05820	94301-10160	PIN, DOWEL, 10X16.....	2	2	
18		29202	95700-06020	BOLT, FLANGE, 6X20.....	1	1	
19		20123	90417-302-000	WASHER, SHIFT DRUM STOPPER.....	1	1	
20		35235	22401-361-000	SPRING, CLUTCH.....	1	1	
21		18103	94002-06000-0S	NUT, THIN, 6MM.....	1	1	
22		33933	22351-360-000	PLATE, CLUTCH PRESSURE.....	1	1	
23		34119	90459-360-000	WASHER, THRUST, 12.5MM.....	1	1	
24		34151	91015-360-000	BEARING, THRUST, 1226.....	1	1	
25		35236	22851-361-000	ROD, LIFTER.....	1	1	
26		36940	90233-360-000	NUT, 16MM.....	1	1	
27		34032	90505-360-000	WASHER, LOCK, 16MM.....	1	1	
28		33931	22201-360-000	DISK, CLUTCH.....	1	1	5
29		35234	22321-361-000	PLATE, CLUTCH.....	4	4	
30		33930	22120-360-000	CENTER COMP., CLUTCH.....	1	1	
31		34122	90463-360-000	WASHER, SPLINE, 20MM.....	1	1	
32		37387	22100-361-020	OUTER COMP., CLUTCH.....	1	1	
33		34127	90501-360-000	WASHER THRUST, 20MM.....	1	1	
34		05576	93600-06012	SCREW, FLAT, 6X12.....	1	1	
35		33866	11105-360-000	PLATE B, BEARING SET.....	1	1	
36		35168	11000-361-000	CRANKCASE SET.....	1	1	
37		34166	96120-63040-00	BEARING, RADIAL BALL, 6304Z.....	1	1	

Crankshaft



Crankshaft

Ref. No.	H/C	Part Number	Description	MT	MT	Remarks	
				125	125K1		
1	35186	13011-361-004	RING SET, PISTON.....	1	1		
	35187	13012-361-004	RING SET, PISTON *0.25* *RIKEN*..... *OPTIONAL PART*	1	1		
	36950	13013-361-004	RING SET, PISTON *0.50* *RIKEN*..... *OPTIONAL PART*	1	1		
	36951	13014-361-004	RING SET, PISTON *0.75* *RIKEN*..... *OPTIONAL PART*	1	1		
	37729	13015-360-003	RING SET, PISTON *1.00* *RIKEN*..... *OPTIONAL PART*	1	1		
	36952	13015-361-004	RING SET, PISTON *1.00* *RIKEN*..... *OPTIONAL PART*	1	1		
	2	34162	94601-14000	CLIP, PISTON PIN, 14MM.....	2	2	
	3	35188	13100-361-003	PISTON COMP.....	1	1	
		35189	13102-361-003	PISTON COMP., *0.25* *OPTIONAL PART*...	1	1	
		36953	13103-361-003	PISTON COMP., *0.50* *OPTIONAL PART*...	1	1	
36954		13104-361-003	PISTON COMP., *0.75* *OPTIONAL PART*...	1	1		
36955		13105-361-003	PISTON COMP., *1.00* *OPTIONAL PART*...	1	1		
4	33882	13111-360-000	PIN, PISTON.....	1	1		
5	34141	91007-360-004	BEARING, CONROD SMALL END.....	1	1		
	34144	91008-360-004	BEARING, CONROD SMALL END.....	1	1		
	34147	91009-360-004	BEARING, CONROD SMALL END.....	1	1		
6	35190	13300-361-000	CRANKSHAFT COMP.....	1	-		
	39437	13300-361-010	CRANKSHAFT COMP.....	-	1		
7	34155	91203-360-003	OIL SEAL, 28X56X9 *NLK*.....	1	1		
8	35903	13331-360-000	KEY, SPECIAL WOODRUFF, 25X14.....	1	1		
9	35168	11000-361-000	CRANKCASE SET.....	1	1		
10	34138	91002-360-004	BEARING, BALL 6305 *KOYO*.....	1	1		